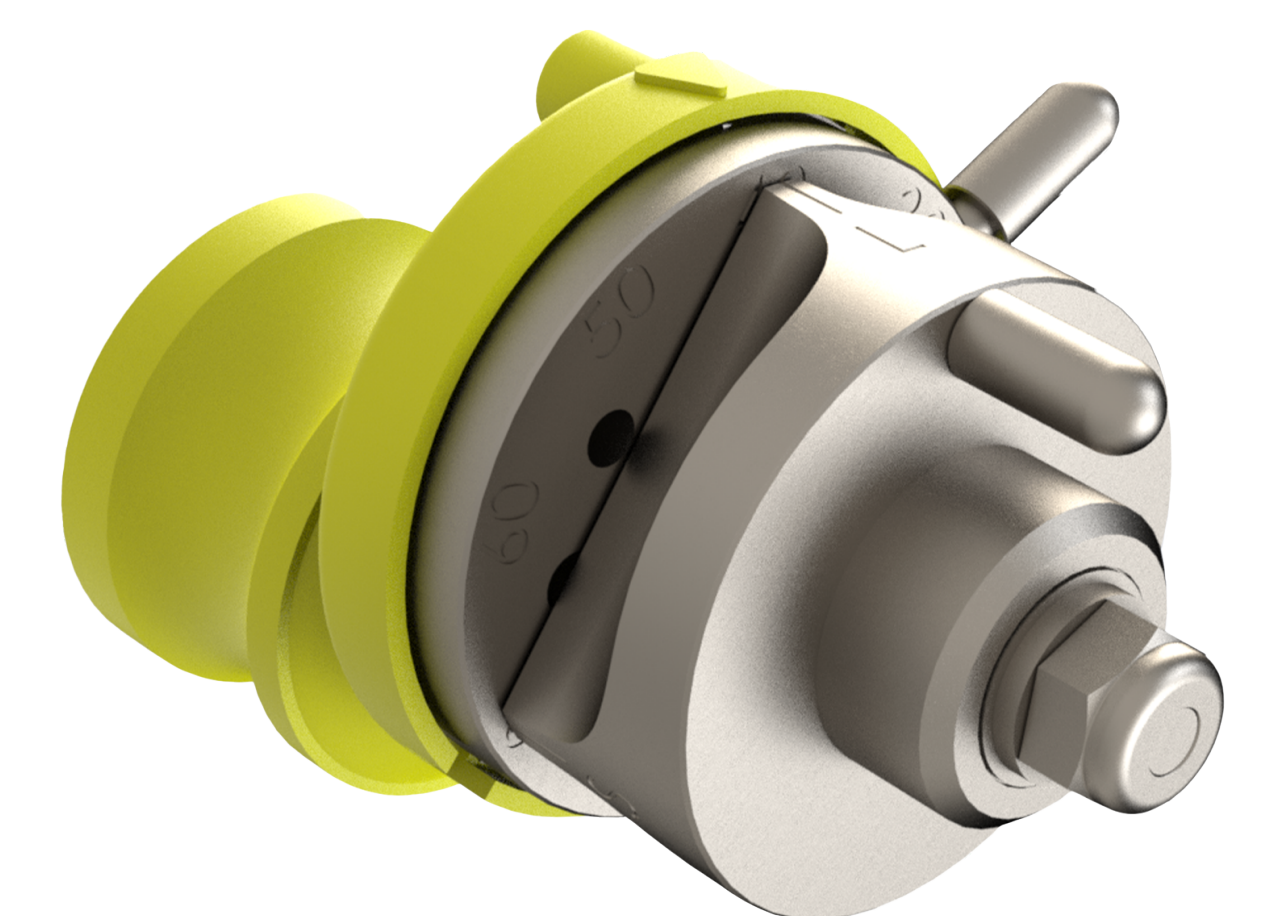
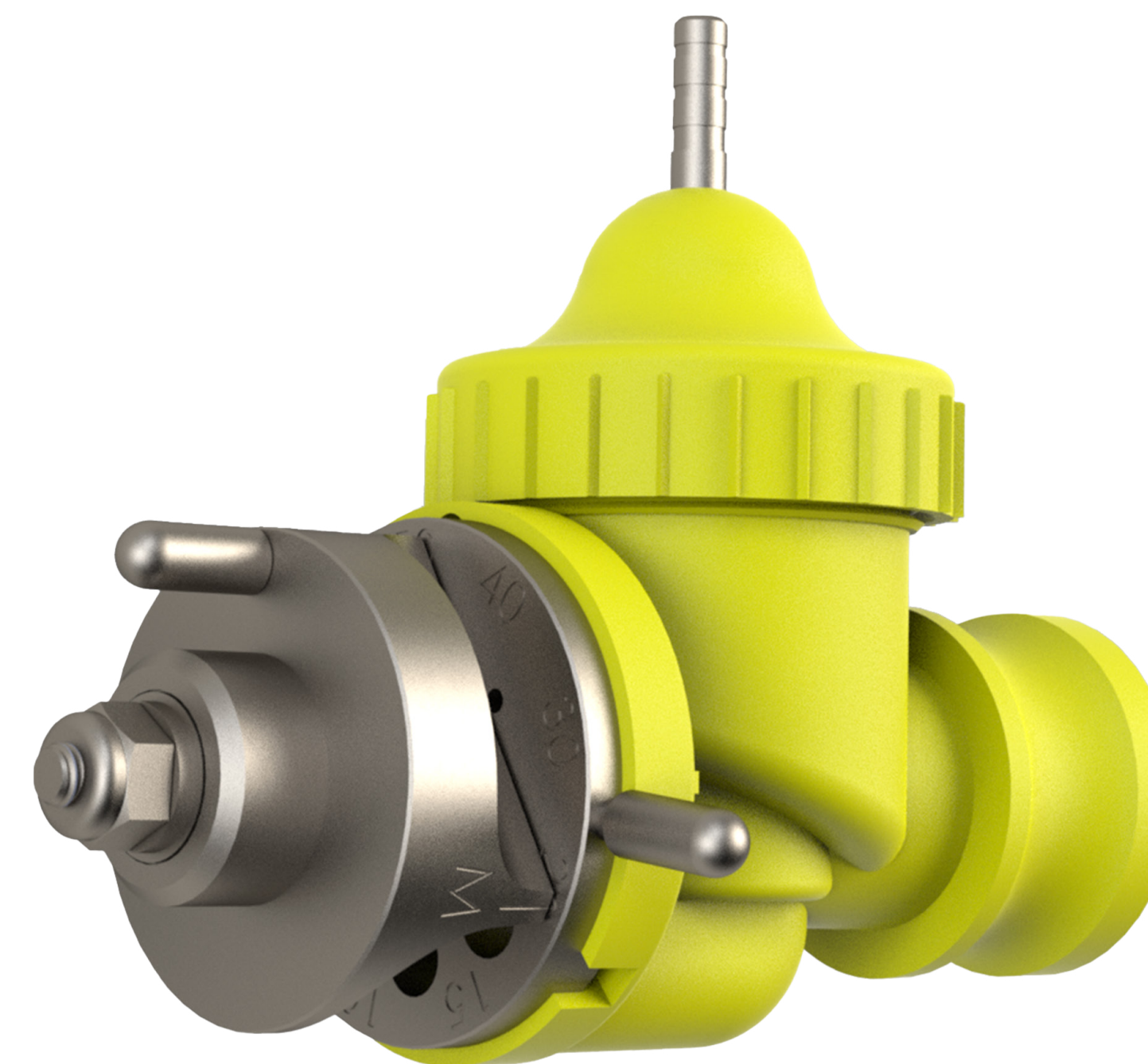




CP-55R3 and CP-102R3
Turbo Floater 3-Way Nozzle and Combo
Spray Classifications

Orifice & Deflection	PSI	GPM	ASABE Classification	VMD Microns
5 Small (S)	30	0.87	C	374
	40	1.00	C	354
	50	1.12	C	365
10 Medium (M)	30	1.73	VC	445
	40	2.00	VC	447
	50	2.24	VC	486
10 Small (S)	30	1.73	VC	412
	40	2.00	VC	413
	50	2.24	VC	457
15 Medium (M)	30	2.60	XC	515
	40	3.00	XC	503
	50	3.35	C	393
20 Small (S)	30	3.46	XC	504
	40	4.00	XC	504
	50	4.47	XC	504
20 Medium (M)	30	3.46	XC	534
	40	4.00	XC	516
	50	4.47	VC	406
30 Large (L)	30	5.20	XC	518
	40	6.00	VC	501
	50	6.71	VC	482
30 Medium (M)	30	5.20	XC	520
	40	6.00	VC	498
	50	6.71	VC	432
40 Large (L)	30	6.93	VC	491
	40	8.00	VC	488
	50	8.94	VC	462
50 Large (L)	30	8.66	XC	507
	40	10.00	XC	511
	50	11.18	VC	479
60 Large (L)	30	10.39	XC	507
	40	12.00	VC	465
	50	13.42	VC	462



Spray Quality Classification	VMD
Medium (M)	236-340
Coarse (C)	341-403
Very Coarse (VC)	404-502
Extremely Coarse (XC)	503-665
Ultra Coarse (UC)	>665

This chart uses the ASABE S572.1 Standard.

Data for CP-55R3 & CP-102R3 Turbo Floater 3-Way nozzles developed by Dr. Womac, PhD, P.E. Assoc. Prof, University of Tennessee Institute of Agriculture, Knoxville, TN. (Malvern laser diffraction instrument, still air) Nozzle Classification using ASABE S572.1 Standard.