

CP PRODUCTS

Get the Drop to the Crop

CP109-LS
Low Volume Floater Nozzle

Speed(MPH)
Spacing
Desire GPA

Tip - Orifice	Estimate of Pressure Needed	Classification
#7.5 Tip - 5 Orifice	45	VC
#18 Tip - 7.5 Orifice	20	XC
#7.5 Tip - 7.5 Orifice	38	C
#7.5 Tip - 10 Orifice	21	C
#7.5 Tip - 15 Orifice	21	C

CP Quick Calculator

The CP Quick Calculator is a free tool for choosing which products and set-ups will work the best for different jobs.

[Click here for the calculator.](#)

Why CP Products?



Initial Cost for CP Setup

- ⌚ Variety of Use of Nozzle Settings
- ⌚ Versatility of Spray Pattern
- ⌚ Durability of Nozzels
- ⌚ Interchangeable Parts
- ⌚ Less Downtime

Application Products =

- ⊗ CP Products
- ⊗ Durability
- ⊗ Toughness
- ⊗ Strength

Other Brand's Install Time

CP Products Install Time

More Downtime = Less Profit Less Downtime = More Profit

Customer Service =

- CP Quick Calculator
- Free Resources
- Trouble Shooting Problems
- Transland Engineer Support
- Direct Line for Dealers

Long-Term Cost Savings

The initial cost of CP nozzles saves money over time because they are long-lasting — made to withstand wear, pressure, and various applications. In addition, if wear or damage occurs, reasonably priced replacement parts are available.

Made with Quality Materials

CP Products uses superior materials to create durable products that withstand the use of different products over multiple seasons.

Time-Savings

The orifices and deflectors allow applicators the ability to dial in the flow rate and droplet sizes needed. This results in saving time and money.

Customer Service

CP Products offers tools to help the applicator be efficient and profitable. It also supports its dealers and customers if a customer has a problem.

Turbo Floater Tip - 5 Stream Tip



PN CPF270T-5ST1



Ideal for liquid fertilizer applications, this accessory tip fits low and high volume versions of the CP Floater Turbo nozzles.

This five-stream tip is excellent for directed liquid application on bare ground or in standing crop.

Features/Benefits

- 5 fully defined clean streams with equal capacity and velocity
- 5-Stream pattern reduces leaf burn and drift
- Ease of interchangeable tips
- Durable Resin construction — impact resistant, UV resistant, and highly wear resistant
- Good chemical resistance



Boom Spacing: 40"

Flow Rate: 4-77 GPA

Operating Speed: 10-20 MPH

Pressure Range: 30-50 PSI

Contact your local dealer for ordering information! [Click here for dealers.](#)

Turbo Floater Nozzles & Check Valve Combos

Change Flow Rates or Droplet Sizes with a Turn of the Dial!

Floater nozzles work well for small grain, pastures, and hayfields.

Each nozzle consists of 8 orifice selections, plus a shut-off. This gives you 24 possible combinations! The Turbo Floater Nozzles and Check Valve Nozzle Combos get any job done without having to buy multiple tips.

Nozzle Check Valve Combo - CP-109LS



Low Volume

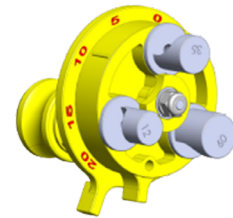
3/4" Cam Lock Inlet

GPM range of .43 to 6.71 @ 30-50psi

Works with 30", 40", and 60" spacing

- CP-59LS - Low Volume Turbo Floater
- CP-109LS - Low Volume Turbo Combo

CAM Lock Turbo Floater Nozzle - CP59HV



High Volume

3/4" Cam Lock Inlet

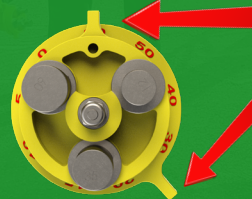
GPM range of .87 to 13.42 @ 30-50psi

Works with 30", 40", and 60" spacing

- CP-59HV - High Volume Turbo Floater
- CP-109HV - High Volume Turbo Combo



How It Works



Turn Deflector Tip Wheel Handle into place desired for tip size.

Turn Selector Handle to click into place desired for orifice size.

Use the flow chart provided by CP Products to find the Orifice/Tip combination to produce the desired GPM.

Multiple tip sizes are available to further customize the nozzle.

Sprayer Turbo Nozzles

The CP Sprayer Turbo nozzles are designed for self-propelled and tractor-mounted sprayers. These nozzles offer a wide range in droplet spectrum, creating as low as 146 microns to larger than 900 microns. This produces excellent drift control. Each CP Sprayer Turbo nozzle version contains six orifices and three tips to create the perfect spray for your needs.

CP-65T-SL



Low Volume

1/4 Turn Quick Disconnect

GPM range of .13 to .67 @ 30-50psi

CP-65T-S



Medium Volume

1/4 Turn Quick Disconnect

GPM range of .26 to 1.1 @ 30-50psi

CP-65T-SH



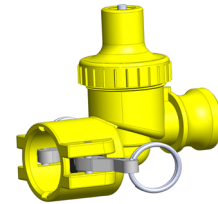
High Volume

1/4 Turn Quick Disconnect

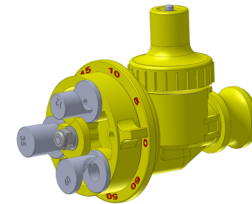
GPM range of .87 to 3.3 @ 30-50psi

Air Stop Valve

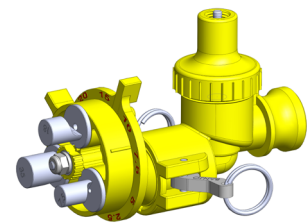
- Standard Viton type diaphragm
- Designed for high or low volume spraying
- Air shut-off and check valve combined
- GPM range .43 to 13.42 (depending on nozzle combo used)
- Air Stop available for Camlock or Pipe thread inputs
- Simple conversion kits are available for those already using other CP nozzles
- Can be used with 30", 40" and 60" spacing



Check Valve & Air Stop Connect with 3/4" Camlock Inlet



All In One CP-109 Version



Check Valve and Air Stop with CP59

The simplicity of the Sprayer Turbo nozzle design, ease of installation, reasonable prices, and parts availability make it an economical alternative to more expensive, maintenance-intensive boom systems.

- Easily adaptable to new and existing sprayers without tools, wiring, or electronics
- Provides (in a single setting) selectable flow rates and droplet sizes, which typically require at least six different hydraulic nozzles
- Flow rates can range from 0.26 to 1.28 GPM at pressures ranging from 30 to 60 psi
- The wide range in droplet sizes allows the flexibility to select droplet sizes to minimize spray drift near sensitive areas, yet permits appropriate selection of droplet sizes for coverage-sensitive crop protection products
- Uniformity of spectrum droplet sizes makes a high percentage of droplets available for dosage transfer, with minimal evaporation of small droplets and minimal spray volume in extremely large droplets that are less effective
- Ease of prescriptively applying large droplets extends conditions under which safe spray applications can be made



The CP-65T-S nozzle was used to spray glyphosate on this field.

Compare to Pinch Valves

- Faster shut-off
- Easy maintenance design that can be done in the field if needed, no tools required (all this keeps workflow going)
- Longer lasting
- Operates at lower air volume, saving wear and tear on compressor (between 20-40 psi higher liquid pressure)
- All-In-One design requires fewer fittings to connect to boom, reducing bulk and possible loss of nozzle

Website: www.translandllc.com
 E-mail contact: sales@translandllc.com
 Headquarters: Wichita Falls, TX

[Click here for dealers.](#)



Dealer List

Alabama

AG Spray Equipment - Dothan
www.agspray.com

Arkansas

Adams Fertilizer Equipment -
Dewitt
www.adamsfertequip.com

California

AG Spray Equipment -
Bakersfield
www.agspray.com

Kisco Sales Inc - Bakersfield
www.kiscosales.com

Colorado

Fairbank Equipment Inc - Evans
www.fairbankequipment.com

Georgia

Newton Crouch Inc - Griffin
www.newtoncrouch.com

Idaho

Heartland Ag Systems - Burley
www.heartlandag.com

Illinois

AGCO Parts Division -
West Chicago
www.agcoparts.com

AGRO-CHEM Inc - Saybrook
www.agrochem.com

Altorfer Inc - Clinton
www.altorfer.com

Altorfer Inc - Rock Falls
www.altorfer.com

Fertilizer Dealer Supply - Philo
www.fertilizerdealer.com

Jenner Sales Corp - Harristown
www.jennerag.com

Linco Precision LLC - El Paso
www.lincoprecision.com

Precision Tank & Equipment -
Athens
www.precisiontank.com

Indiana

AGRO-CHEM Inc - Wabash
www.agrochem.com

Fertilizer Dealer Supply -
Brookston
www.fertilizerdealer.com

Iowa

Dultmeier Sales - Davenport
www.dultmeier.com

Fertilizer Dealer Supply - Jesup
www.fertilizerdealer.com

Heartland Ag Systems - Ames
www.heartlandag.com

The Gator Center - Fort Dodge
www.thegatorcenter.com

Kansas

AG Spray Equipment - Newton
www.agspray.com

B Z Bee, Inc. - Lyons
www.bzbeeing.com

Fairbank Equipment Inc -
Garden City
www.fairbankequipment.com

Fairbank Equipment Inc -
Wichita
www.fairbankequipment.com

Heartland Ag Systems -
Great Bend
www.heartlandag.com

Lang Diesel Inc. - Chanute
www.ldi.us

Lang Diesel Inc. - Salina
www.ldi.us

Kentucky

AG Spray Equipment -
Hopkinsville
www.agspray.com

Michigan

Fertilizer Dealer Supply -
Morrice
www.fertilizerdealer.com

Minnesota

Abner Sales - Benson
320-843-3699

AG Spray Equipment - Mankato
www.agspray.com

Heartland Ag Systems -
Hutchinson
www.heartlandag.com

Mississippi

AG Spray Equipment -
Greenwood
www.agspray.com

Wade, Inc. - Indianola
www.wadeincorporated.com

Missouri

Fertilizer Dealer Supply -
Boonville
www.fertilizerdealer.com

Heartland Ag Systems -
Marshall
www.heartlandag.com

Montana

Heartland Ag Systems -
Great Falls
www.heartlandag.com

Nebraska

AG Spray Equipment -
Columbus
www.agspray.com

Butler Machinery Co - Kearney
www.butlermachinery.com

Dultmeier Sales - Omaha
www.dultmeier.com

Fairbank Equipment Inc -
Grand Island
www.fairbankequipment.com

Heartland Ag Systems -
Grand Island
www.heartlandag.com

Select Sprayers & Equipment -
Kearney
www.selectsprayers.com

North Dakota

AG Spray Equipment - Fargo
www.agspray.com

Heartland Ag Systems -
Garrison
www.heartlandag.com

Heartland Ag Systems - Manvel
www.heartlandag.com

Ohio

AGRO-CHEM Inc - Wilmington
www.agrochem.com

Fertilizer Dealer Supply - Anna
www.fertilizerdealer.com

Oklahoma

Fairbank Equipment Inc -
Chandler
www.fairbankequipment.com

Wylie Spray Center -
Oklahoma City
www.wyliesprayers.com

Pennsylvania

Independent AG/ GVM -
Biglerville
www.gvmdist.com

South Dakota

C & R Supply, Inc. - Sioux Falls
www.crsupply.com

Fairbank Equipment Inc -
Yankton
www.fairbankequipment.com

Heartland Ag Systems -
Mitchell
www.heartlandag.com

Texas

Martinek Grain & Bins Inc -
Gunter
www.martinekgrain.com

Wylie Implement & Spray Center

www.wyliesprayers.com

Abilene: 800-588-7100
Amarillo: 855-335-2861
Brownsville: 844-550-8822
Edinburg: 800-514-9381
Lamesa: 877-308-9685
Lubbock: 800-722-4001
Lubbock: 888-249-5162
Munday: 800-338-2401
Plainview: 855-293-4116
Raymondville: 844-689-2137
Seminole: 888-758-1181
Corpus Christi: 844-526-7284
www.wyliesprayers.com
El Campo: 800-474-2416
Hewitt: 800-803-5845

Washington

AG Spray Equipment - Othello
www.agspray.com

Heartland Ag Systems -
Moses Lake
www.heartlandag.com

Wisconsin

Fertilizer Dealer Supply -
Milton
www.fertilizerdealer.com

Heartland Ag Systems -
DeForest
www.heartlandag.com